

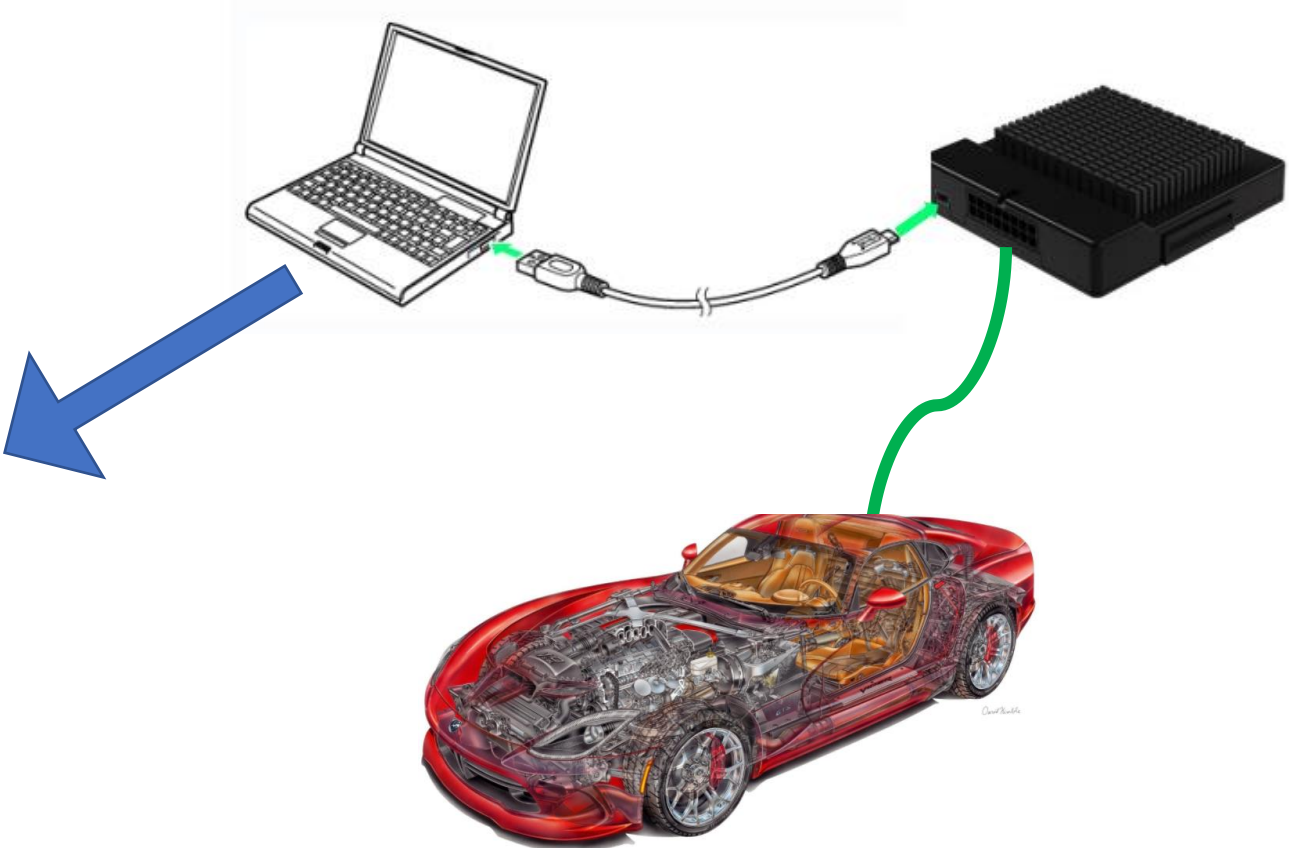
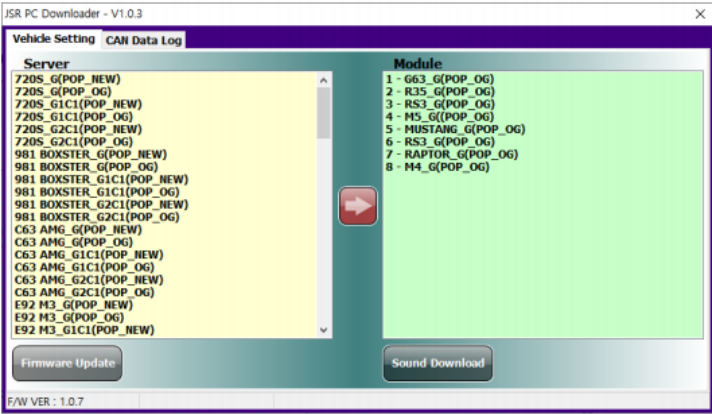
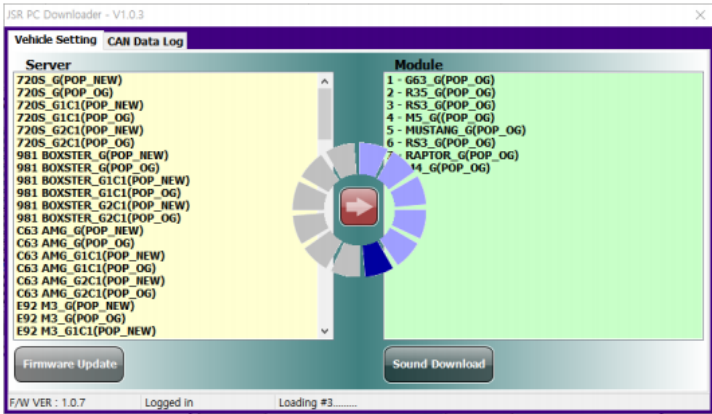
1. Select the button you want to use.

- A button that does not operate any function is recommended even if the button press is maintained for more than 3 seconds.
- I marked the button we use a lot on the picture.
- In addition, you can test additional buttons that you think are suitable for use.



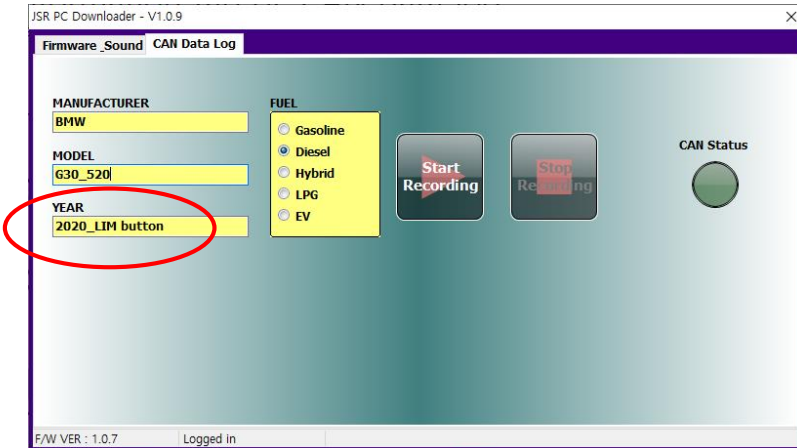
2. Connect the 'DLP PROGRAM' with the module connected to the vehicle.

- If the sound is generated in "XHAUST," it is the best condition to test.

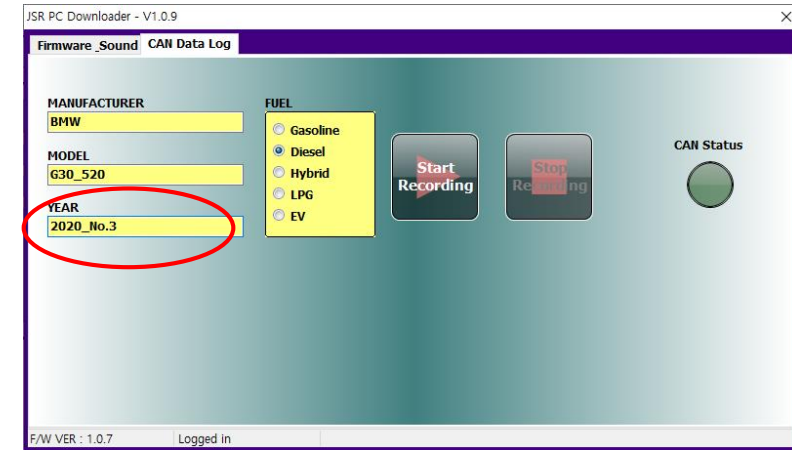


3. Fill in the information tab of 'CAN data log'.

- In the last tab, please enter the name of the button you want to test now.
- Or, please numbering the button to test and send it with the picture.
- Once you have filled in all the tabs, click the **'Start Recording'** button.

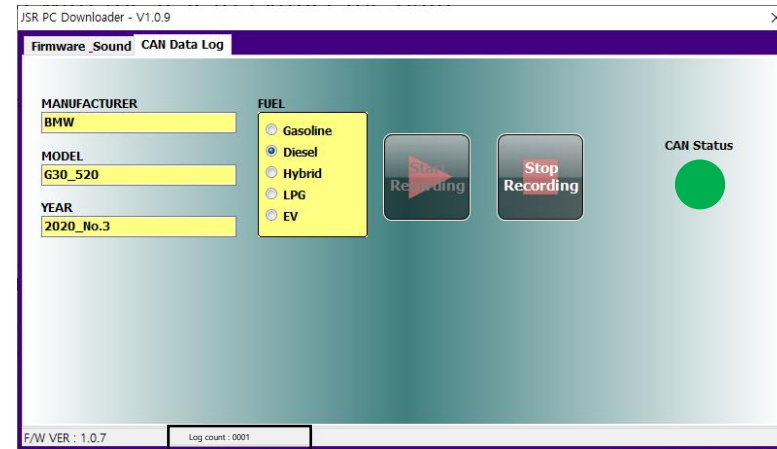


Or



4. Proceed with the test to extract the data.

- You can check the status of data extraction in two display states.
- The 'CAN Status' part is displayed in bright green.
- The number of 'log count' increases in the status bar at the bottom.



Log count : 0001

4-1. Actuate the button you want to test according to the Log count number.

- Press the button in 5000 units of Log count.
Ex) 5000 & 15000 & 25000 & 35000 - - -
- Keep pressing until the next step.
- Release the button in units of 10000.
Ex) 10000 & 20000 & 30000 & 40000 - - -

***** You don't have to match the exact unit.
(Ex_ Whether it's 5050 or 5100, press about 5,000 and release it about 10,000.)

***** You can collect about 60,000 EA of data and stop it.(Repeat 5 ~ 6 tests).

***** It's better to submit a test video together.

- When the test is complete, press 'Stop Recording' and upload the data according to the guidance message.

